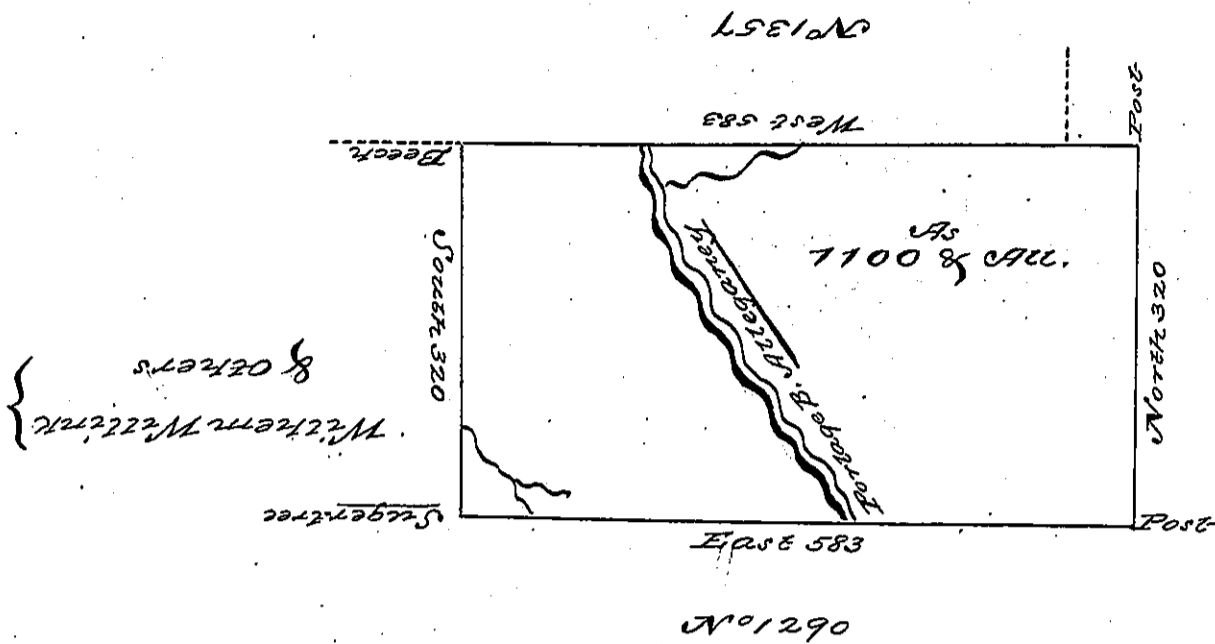


N<sup>o</sup> 62



Situated on the Portage Branch of Allegany about three miles South of the Allegany River in North<sup>d</sup> County containing <sup>acres</sup> 1100<sup>00</sup> and the usual allowance for Roads &c. Surveyed June 29<sup>th</sup> 1793 by Robert Blackwell in pursuance of a Warrant N<sup>o</sup> 312 bearing date the 27<sup>th</sup> day of April 1792

Daniel Brodhead Esq. Sg. John Canan D<sup>c</sup>.

IN TESTIMONY that the above is a copy of the original remaining on file in the Department of Internal Affairs of Pennsylvania, made conformably to an Act of Assembly approved the 16th day of February, 1833, I have hereunto set my Hand and caused the Seal of said Department to be affixed at Harrisburg, this First day of February 1898

*James W. Patton*  
Secretary of Internal Affairs.